

High Performance CD/DVD/BD Desktop Publishing System

The *Mito 100* desktop publishing system offers CD, DVD and Blu-Ray duplication and printing in a flexible Windows 2000/XP/Vista based production environment. With a 50 disc in/out capacity (100 disc with optional slider), up to 2(four) 16XDVD, 40XCD, 2Xblu ray recorders and ink jet print capabilities *Mito 100* can handle even the most challenging production needs.

Features

- Up to 2 high-performance **16XDVD, 40XCD or 2X Blu ray** recorders.
- **50** disc for duplication and/or printing. 100 disc with optional slider.
- Copies **most of the current DVD/CD/BLU ray formats** (audio & data).
- **4800dpi Ink Jet** disc printer.
- Print labels directly on the DVD/CD/BD disc from the *Mito 100* graphics application program (JPEG or BMP) or from PRN file.
- Automatic processing of CD/DVD Publishing jobs incoming from your Intranet/Internet clients (ECP option).
- Powered by Microsoft **Windows 2000/XP/Vista**.
- Unlimited number of jobs queuing. Limited only by the size of the internal hard disc in the PC.
- Single or Multi Master duplication and printing with no operator intervention.
- **Duplicate and Digital Color Quality Print** up to **15 DVD, 30 CD** per hour.
- Support duplication and/or printing of mini CD or business card CD.
- High speed USB2 data interface.
- **Disc serialization** with customer's chosen string.
- Optional Bar Code printing.
- **Merge** Graphics with variable text.
- Optional unlimited number of users Client/Server software.

ALEA SYSTEMS

The **Mito 100** desktop publishing system supports several CD/DVD/BD production strategies:

1. Server Job Manager
2. Client Job Manager

Create jobs from CD/DVD Image and Print files saved in the Server PC.
Create jobs from CD/DVD Image and Print files saved in the Client PC.

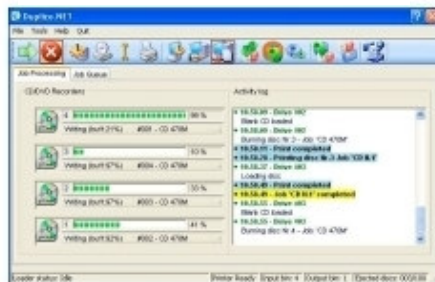
3. Single master copy:

While in this mode, **Mito 100** copies just one Master CD/DVD/BD. You set the number of copies, the system does the rest.

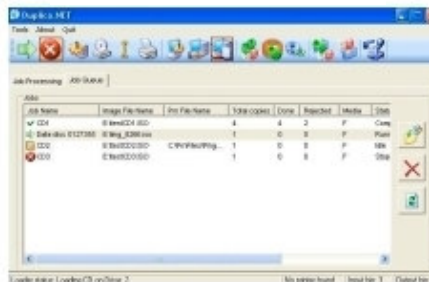
4. Multi-master copy:

This "Automatic or Batch Mode" allows the **Mito 100** to copy several master CD/DVD automatically. While in this mode, the system reads the CD/DVD Image from the first Master and will continue to copy it as long as there are blank discs available in the Input Bin. As soon as the system finds a new Master Disc, the process starts all over again.

Mito 100 Job Processing



Mito 100 Job Queue



Mito 100 Label Editor



Mito 100 ECP Network Client



Minimum PC System Requirements:

- PC with P4/2Ghz, 256MB ram, Windows 2000/XP/Vista, 60GB+ HDD,
- USB2 ports

Temperature:	5 to 35 Degrees Centigrade
Relative Humidity:	10% to 80% no condensing
Size (W/H/D):	17.8" x 11" x 17.5" (45cmX28cmX45cm)
Weight:	26 lbs, (12 Kg)
Power:	Switchable 110VAC and 220VAC
Agencies:	FCC class B, CE

All trademarks are property of their respective holders. Specifications are subject to change without notice. 07/08



ALEA SYSTEMS Inc.
10900 Pump House Road, Suite B
Annapolis Junction, MD 20701, USA
Phone: (301) 776-3754
Fax: (443) 926-0166
Web Site: www.alea.com

ALEA Europe
Via degli Olmetti 39f
00060 Formello (RM), Italy
Phone: +3906-907-5169
Fax: +3906-907-5733
E-Mail: sales@alea.com