

Pingo Jet Rep



Pingo Rep 300

2 Cent per print!



Pingo Rep 800

300 & 800 DISC BULK-INK INDUSTRIAL PRINTING STATION

The Pingo Rep™ is a sound, durable, and highly crafted and engineered autoloading CD ink jet printing system with incredible precision. A "must" for those who want the best full bleed, edge-to-edge graphics coverage.

What makes it so special is that the Pingo Rep™ allows the user to print unattended for a considerable amount of time thanks to its 300 or 800 disc holders and Alea's own Ink Fountain, the ink refill system. This system lets the user monitor the ink level with 100% certainty and most of all, it lets him/her print at 2 cents per print!

The Pingo Rep™ is a robust, industrial strength, autoloading CD ink jet printer equipped with an advanced CD locking mechanism for precision based CD printing. Based on the sturdy HP printer engine, this autoloading CD/DVD printer offers precision registration and full bleed, edge-to-edge printing for the most discriminating of customers. This autoloading CD printer is perfect for service bureaus and others who must print complete graphic art on the entire printable surface of the CD-R and at the same time want to save money on consumables. It prints using HP's Photo Ret IV system for crisp and vibrant true 4 Color (CMYK) results at up to 4800 x 1200 dpi.

- A CD Printer with the legendary HP performance and reliability.
- **Pingo Ink Fountain**, the embedded bulk ink supply system that cuts the cost-per-copy down to 2 cents per print (Standard feature of the Pingo Rep 800. Option with Pingo Rep 300).
- HP's PHOTO Ret IV™ Color layering technology produces sharper images, natural skin tones, and brilliant colors.
- 300 or 800 BD/CD/DVD bin capacity.
- Print up to 1500 discs per day without having to change the ink cartridges.
- Prints directly from Graphic Program or from ".PRN" files.
- Prints bar codes.
- Prints up to 90 CD/hour.
- **NEW!** Integrated label editor to: create prn files, serialize discs, print bar codes and merge addresses from a database.
- **NEW!** Up to 4 print stations driven by the same PC!
- **NEW!** Multiple jobs queueing.
- Three-year or 100000 prints warranty on Robotics.
- 100,000 hours robotics MTBF.
- Expandable with up to 4 CD/DVD burners at any time.

ALEA SYSTEMS

ROBOTICS

CD Picker: Proprietary, Patented and maintenance-free mechanical picker.

Traction: Rack and pinion, maintenance free design. Controlled by a serial port and a Windows application program.

Control Interface

COM or USB

Disc Capacity

Up to 800 discs per batch, input and output.

CD PRINTER

PRINTING RESOLUTION

Up to 4800 X 1200 dpi on Photo Coat media.

PRINT SPEED

30 (4800dpi) to 180 (black text only) prints per hour.

Digital photo quality: 50 prints per hour

INK CARTRIDGE LIFE

Approx. 2400 CDs, "normal" setting with "INK FOUNTAIN".

INK TYPES

Customized and standard dual-cartridge **3-Color** HP57 (C,M,Y) and black HP56 (K).

COLOR MATCHING

HP's PhotoRet IV

MEDIA TYPES

Printable-surface CD-R or DVD-R.

PRINTER DRIVERS

Supplied with drivers for Windows XP, 7 and 2000.

PRINTER INTERFACE

USB and Parallel.

MINIMUM SYSTEM REQUIREMENTS

Windows 2000 Pentium®-class computer or better, 128MB RAM, 100MB free hard drive space.

INCLUDED WITH SYSTEM

2 DB9 Serial cables, 1 USB cable, and Diskus graphics software.

1 set of modified HP ink cartridges (PIF) or one set: of standard type 56 and 57.

OPERATING SYSTEMS

Win 2000, XP.

POWER

110 and 220 VAC, 50/60 hertz.

TEMPERATURE & HUMIDITY

59°F to 77°F (15°C to 25°C), 40% to 60% non-condensing.

AGENCIES

CE, FCC Class A.

DIMENSIONS

22"H x 31"W x 10"D (55cm x 78cm x 43cm).

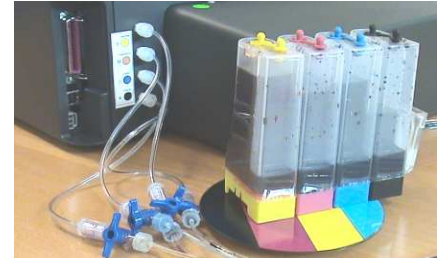
WEIGHT

105 pounds (48kg).

WARRANTY

Three year or 100000 prints on robotics. One year on CD Printer.

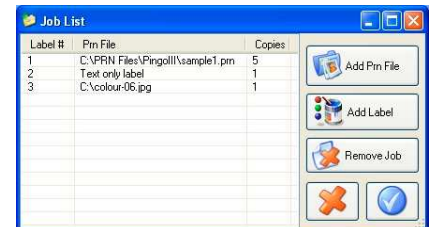
Pingo Ink Fountain



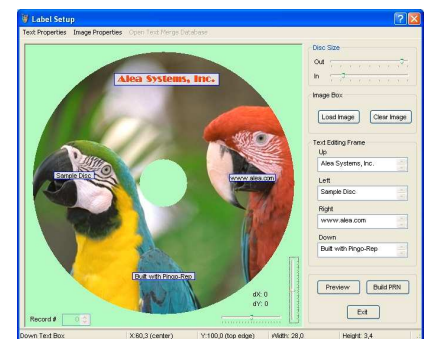
Patented Cartridge Retainer



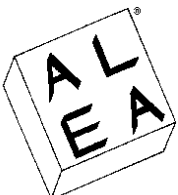
Pingo Rep.Net Job Scheduler



Pingo Rep.Net Label Editor



All trademarks are property of their respective holders. Specifications are subject to change without notice. 02/11



ALEA SYSTEMS Inc.
Phone: (443) 393-6654
Web Site: www.alea.com
E-Mail: sales@alea.com

In Europe: **ALEA EUROPE** a division of **DUPLICO**
Via degli Olmetti, 40B
00060 Formello (RM), Italia
Phone: (+39-06) 9075169
Fax: (+39-06) 9075733
E-Mail: sales@alea.com